

06

Line Rescue Supervisor

HEIGHT SAFETY FOR RESCUE
COURSES FOR THE EMERGENCY SERVICES

HSR TRAINING 6

DURATION

5 days including assessment

RATIO OF TRAINEES TO TRAINERS

Normally 1:4

REGISTRATION AND PRE-COURSE INSTRUCTIONS

All trainees must hold a current Line rescue Operative or equivalent qualification prior to commencing this course

- All delegates to be registered on the course registration form.
- All delegates to be advised of the following
 - Fire procedures
 - Toilets and Welfare

This module is designed as an enhancement of HSR1 and Line Rescue Operative. Delegates must successfully complete HSR1 and Line Rescue Operative or an equivalent recognised qualification prior to commencing this module.

INTRODUCTION

The course is designed to provide:

- The knowledge required to maintain a line rescue team capability
- The knowledge required to operate a line rescue team in an operational environment.
- The skills required to supervise and perform rescues in areas/situations where line rescue are most commonly tasked to operate
- Supervisors will be able to oversee the inspection, care and maintenance of all the associated equipment required for the techniques.

COURSE SYLLABUS**Theory**

To include a more detailed view of all aspects of the Line Rescue Operatives module as well as the following additional or more significant topics:

- Health & Safety Legislation
- The Importance of continual practical training
- Safety during practical training exercises
- Instructional technique
- Advanced Rigging Techniques
- Advanced Access Techniques
- Advanced Rescue Techniques

EQUIPMENT PROCEDURES

Implementation of systems for:

- Equipment Storage

- Equipment Maintenance
- Equipment Inspection
- Equipment Issue

OPERATIONAL PROCEDURES

To be capable of carrying out:

- Operational Risk Assessment
- Operational Safety Method Statement
- Supervision / participation in all line rescue operations

COURSE SYLLABUS**Practical**

- Advanced Rigging Techniques
- Advanced Access techniques
- Advanced Rescue Techniques

COURSE SUMMARY

In addition to the test carried out in HSR1 AND Line Rescue Operative all delegates will be monitored by the trainer throughout the practical sessions. Any concerns will be addressed by delegate and trainer on a continual basis.

In addition the course includes a final practical assessment covering all aspects of the course.

- Summary of the topics covered
- Clarify areas of concern
- Issue of course feedback forms
- Thank the delegates for attending

SPECIALIST EQUIPMENT REQUIRED

- Line Rescue kits
- Fall arrest harnesses
- Fall arrest and restraint lanyards
- Stretchers
- Casualty Harness

FEEDBACK TO CLIENT AFTER COURSE

- Certificate for all successful delegates valid for three years
- Photo ID cards for all successful delegates valid for three years
- Written appraisal of trainee can be provided if required

RECORDS TO BE MAINTAINED BY SPANSET

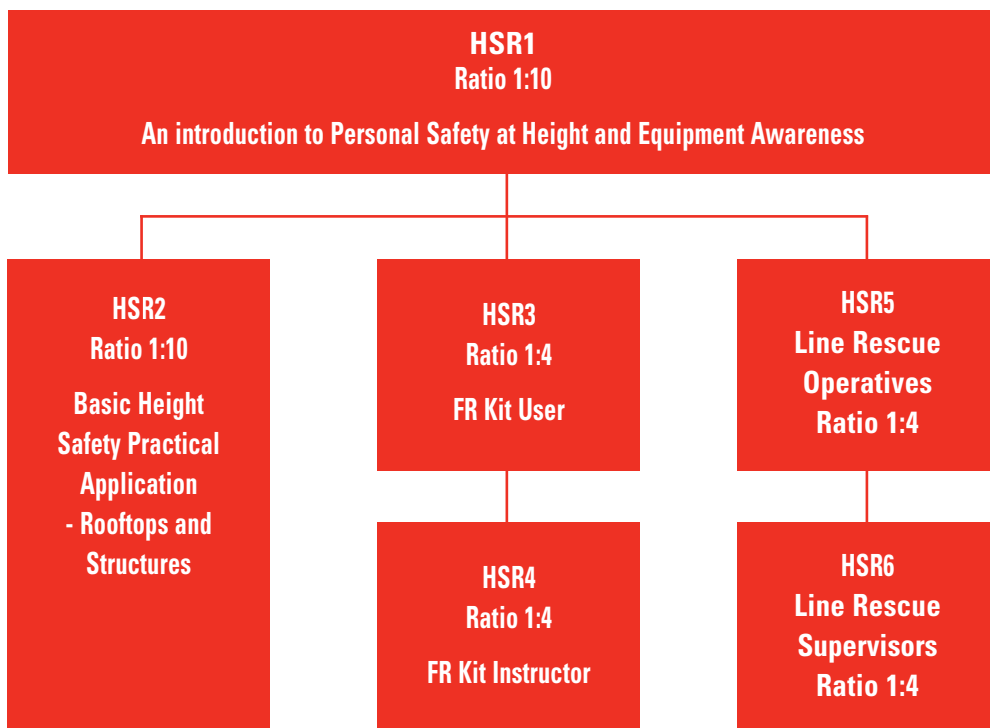
- Course registration sheet
- Copy photo for duplicate issue
- Course feedback forms where completed



GENERAL INFORMATION

SpanSet®

TRAINING COURSE HIERARCHY



COURSE JOINING INSTRUCTIONS

Course Assembly

Unless otherwise stated, all courses are held at SpanSet (UK) Limited and will assemble at 0900 hrs daily. Delegates should report to the main training reception upon arrival.

Food & Refreshment

Refreshments will be provided throughout the day on all courses.

A lunch will be provided on all courses of a day or more in duration held at SpanSet.

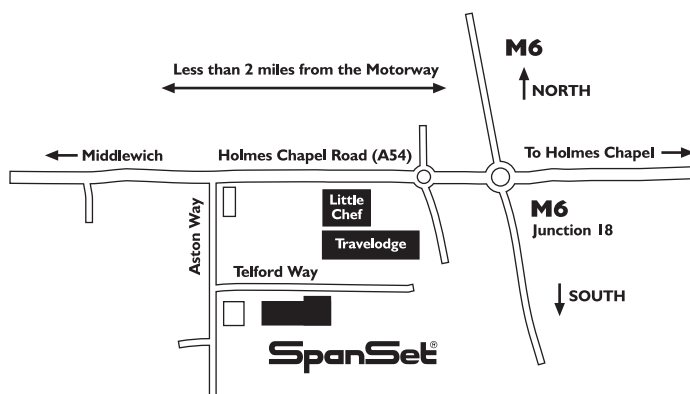
Equipment & Clothing

All equipment required throughout the course will be provided by SpanSet Ltd.

Candidates should provide their own comfortable clothing and footwear, with provision made for inclement weather conditions, i.e. fleeces, waterproofs, windproof, etc.

Accommodation

Details of local accommodation on request.



 **BuyOnline** @ www.spanset.co.uk

SpanSet Ltd, Telford Way, Middlewich, Cheshire CW10 0HX, UK
Tel: +44 (0)1606 737494 Fax: +44 (0)1606 737502 www.spanset.co.uk